

Catalog Name :

FEPIC PRESENTS CHIKANKARI
GEORGETTE WITH EMBROIDERY
WHOLESALE PAKISTANI SUIT

Catalog Pcs :

7

Avg. Price :

Rs. 1199

Product Price : (+ 5 % GST)

Rs. 8393

Product Weight :

8



Fepic[®]

Rosemeen[®]

IMAGE CHIKANKARI
COLLECTION

D.NO.46021







**D NO
46025**

ROSEMEEN
Fepic

Fepic



ROSEMEEN
Fepic

Fepic

**D No
46022**



Eepic

ROSEMEEN
Eepic

**D No
46024**



ROSTMIN
Fepio
Lace

Fepio

D No
46023



Fepic

ROSEMEEN
Fepic

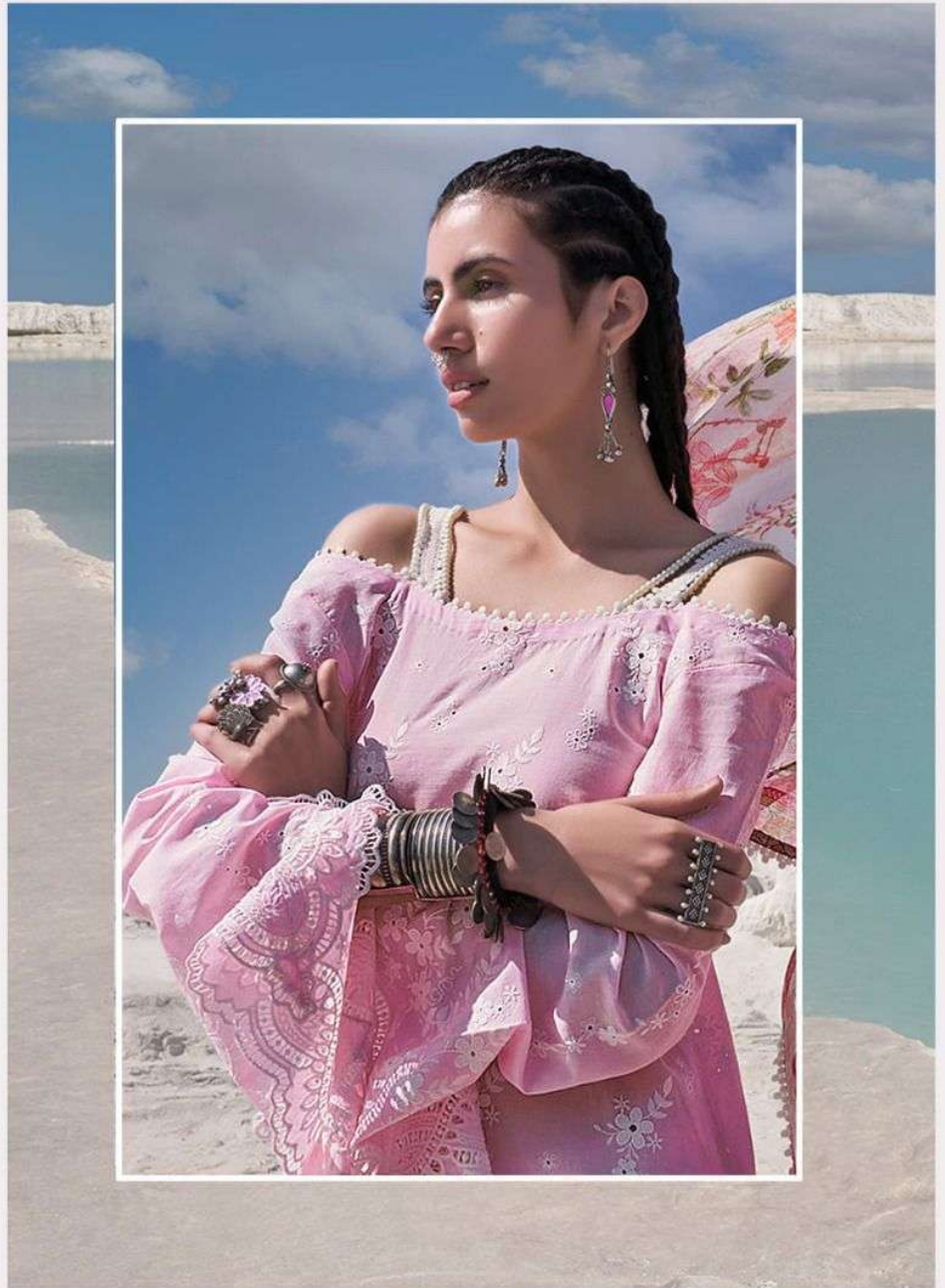
D No
46021

Fepic[®]

Rosemeen[®]

IMAGE CHIKANKARI
COLLECTION

D.NO.46025



Epic®



Rosemeen®

IMAGE CHIKANKARI
COLLECTION

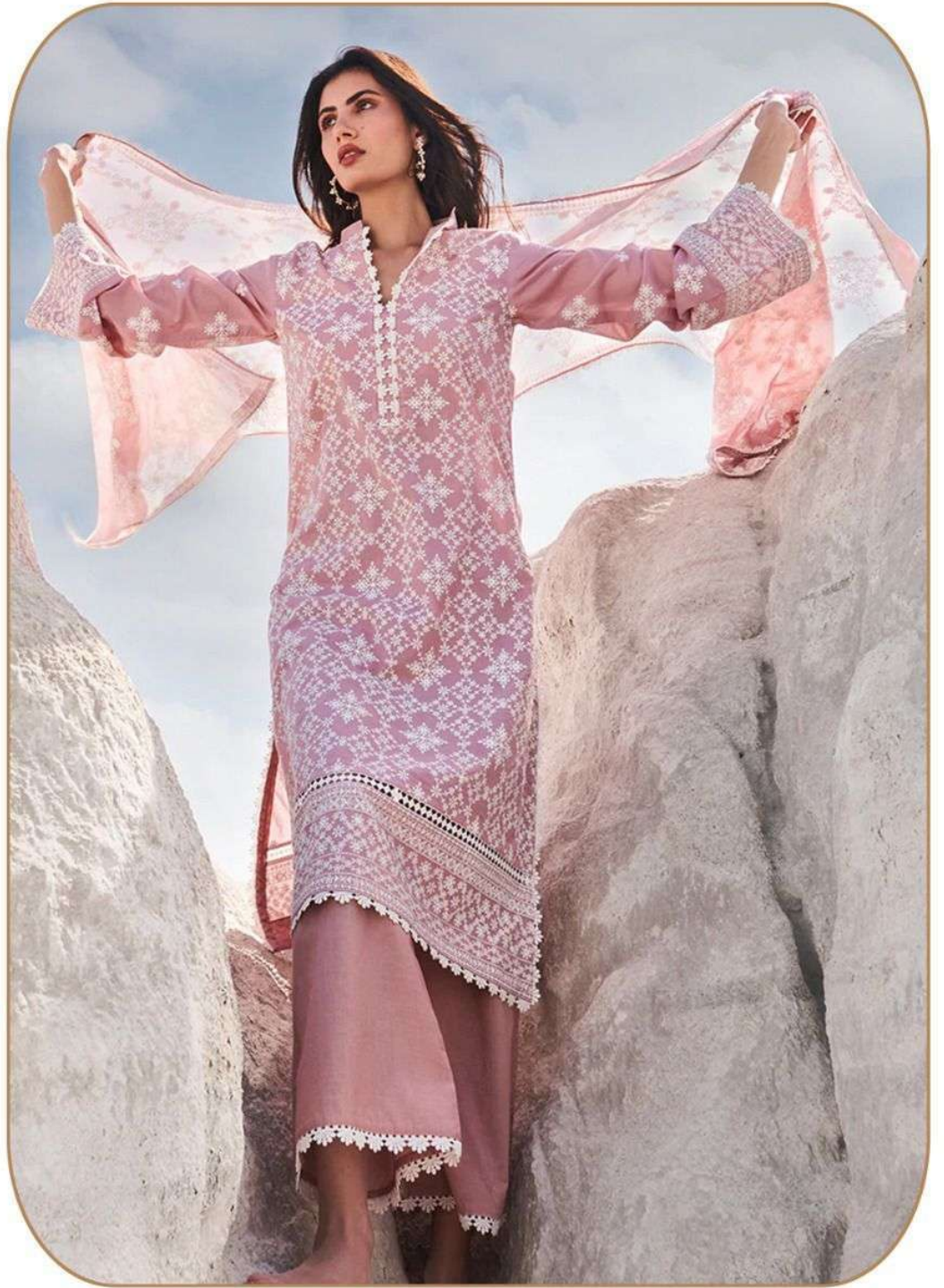
Fepic[®]



Rosemeen[®]

IMAGE CHIKANKARI
COLLECTION

D.NO.46024



Fepic[®]

Rosemeen[®]

IMAGE CHIKANKARI
COLLECTION

D.NO.46027

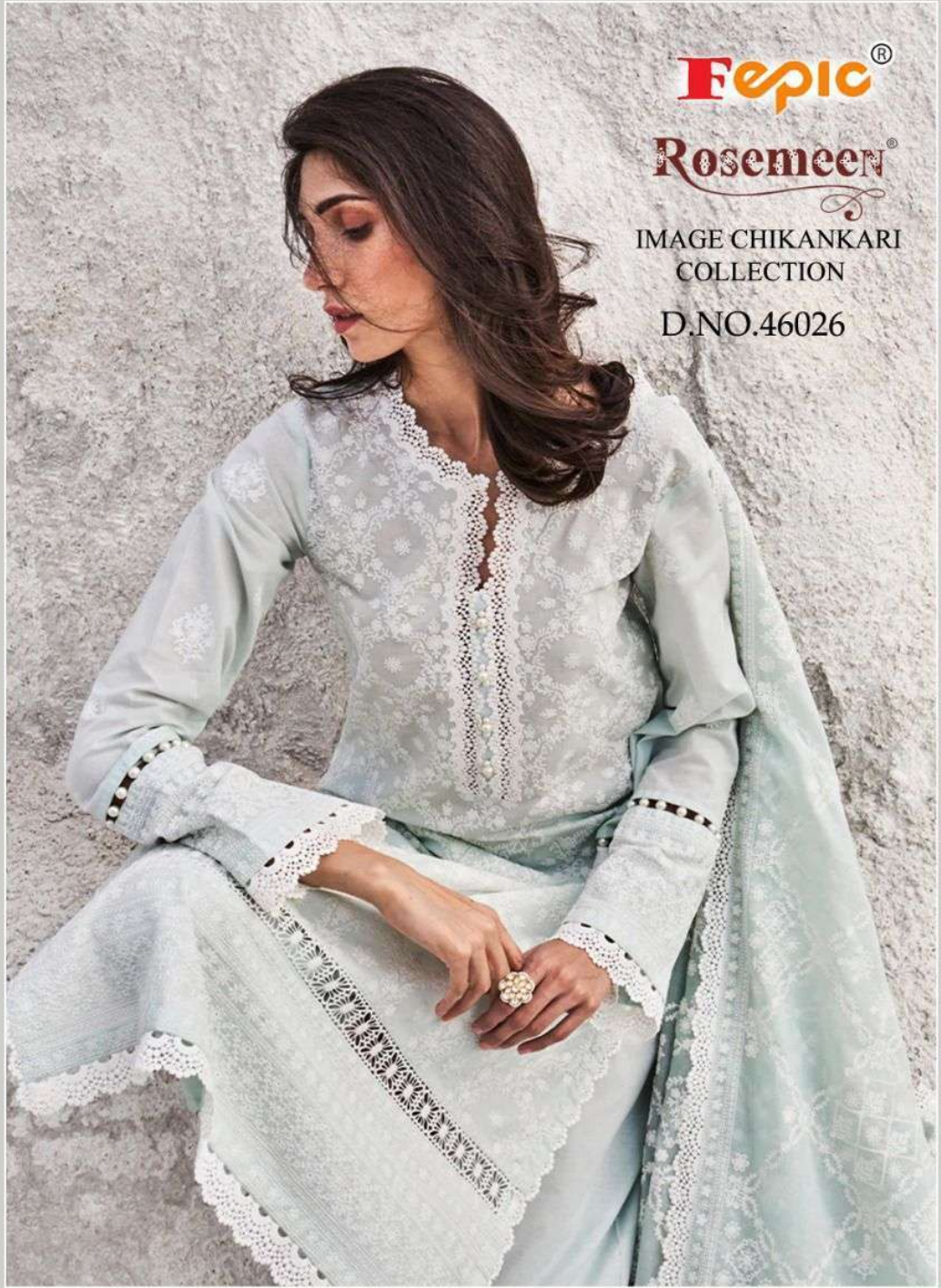


Epic[®]

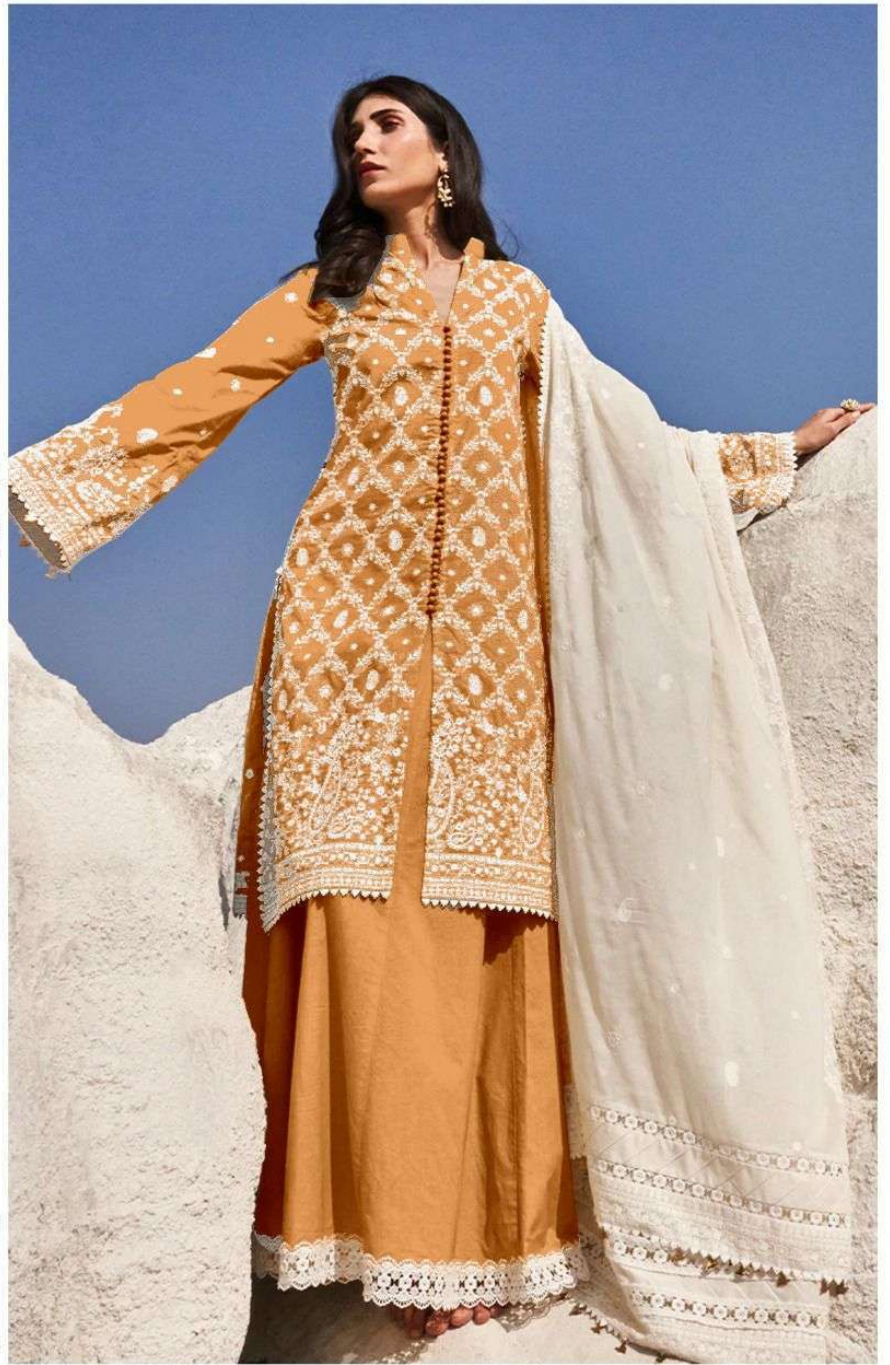
Rosemeen[®]

IMAGE CHIKANKARI
COLLECTION

D.NO.46026



Fepic®



WASHING INTRUCTIONS

DO NOT USE ANY TYPE OF BLEACH OR STAIN REMOVING CHEMICALS
BEFORE CUTTING / STITCHING, FABRIC SHOULD BE SOAKED BE SOAKED IN WATER
(ALL COMPONENTS SEPARATELY) FOR 15 MINUTES
DO NOT KEEP WET FABRIC IN TWISTED FROM IN ORDER TO AVOID COPY MARKS |
WASH COLOURED AND WHITE FABRICS SEPARATELY
IRON CLOTHES AT MODERATE TEMPERATURE | DO NOT DRY FABRIC IN DIRECT SUNLIGHT
(EXTRA LACES, HANGINGS AND ACCESSORIES ARE NOT INDUDED)

Rosemeen®

IMAGE CHIKANKARI
COLLECTION

D.NO.46022



Fepic[®]



Rosemeen[®]
IMAGE CHIKANKARI
COLLECTION

D.NO.46022



Eepic



Rosemeen[®]
IMAGE CHIKANKARI
COLLECTION
D.NO.46023



Fepic[®]

Rosemeen[®]

IMAGE CHIKANKARI
COLLECTION

D.NO.46021



Fepic®



WASHING INTRUCTIONS

DO NOT USE ANY TYPE OF BLEACH OR STAIN REMOVING CHEMICALS
BEFORE CUTTING / STITCHING, FABRIC SHOULD BE SOAKED IN WATER
(ALL COMPONENTS SEPARATELY) FOR 15 MINUTES
DO NOT KEEP WET FABRIC IN TWISTED FROM IN ORDER TO AVOID COPY MARKS |
WASH COLOURED AND WHITE FABRICS SEPARATELY
IRON CLOTHES AT MODERATE TEMPERATURE | DO NOT DRY FABRIC IN DIRECT SUNLIGHT
(EXTRA LACES, HANGINGS AND ACCESSORIES ARE NOT INDEDUD)

Rosemeen®
IMAGE CHIKANKARI
COLLECTION
D.NO.46024



Epic®



WASHING INTRUCTIONS

DO NOT USE ANY TYPE OF BLEACH OR STAIN REMOVING CHEMICALS
BEFORE CUTTING / STITCHING, FABRIC SHOULD BE SOAKED IN WATER
(ALL COMPONENTS SEPARATELY) FOR 15 MINUTES
DO NOT KEEP WET FABRIC IN TWISTED FROM IN ORDER TO AVOID COPY MARKS |
WASH COLOURED AND WHITE FABRICS SEPARATELY
IRON CLOTHES AT MODERATE TEMPERATURE | DO NOT DRY FABRIC IN DIRECT SUNLIGHT
(EXTRA LACES, HANGINGS AND ACCESSORIES ARE NOT INDDUED)

Rosemeen®

IMAGE CHIKANKARI
COLLECTION

D.NO.46023





Fepic®



WASHING INTRUCTIONS

DO NOT USE ANY TYPE OF BLEACH OR STAIN REMOVING CHEMICALS
BEFORE CUTTING / STITCHING. FABRIC SHOULD BE SOAKED BE SOAKED IN WATER
(ALL COMPONENTS SEPARATELY) FOR 15 MINUTES
DO NOT KEEP WET FABRIC IN TWISTED FROM IN ORDER TO AVOID COPY MARKS |
WASH COLOURED AND WHITE FABRICS SEPARATELY
IRON CLOTHES AT MODERATE TEMPERATURE | DO NOT DRY FABRIC IN DIRECT SUNLIGHT
(EXTRA LACES, HANGINGS AND ACCESSORIES ARE NOT INLUDED)

Rosemeen®

**IMAGE CHIKANKARI
COLLECTION**

D.NO.46025



Epic®



Rosemeen®

IMAGE CHIKANKARI
COLLECTION