

Catalog Name :

FEPIC PRESENTS ROSEMEEN ADSANEY
CAMBRIC COTTON PRINTED WHOLESALE
PAKISTANI SUITS

Catalog Pcs :

7

Avg. Price :

Rs. 699

Product Price : (+ 5 % GST)

Rs. 4893

Product Weight :

7



Fepic[®]
Rosemeen[®]
Afsaney



Fepic®



WASHING INSTRUCTIONS

DO NOT USE ANY TYPE OF BLEACH OR STAIN REMOVING CHEMICALS
BEFORE CUTTING / STITCHING, FABRIC SHOULD BE SOAKED IN WATER
(ALL COMPONENTS SEPARATELY) FOR 15 MINUTES

DO NOT KEEP WET FABRIC IN TWISTED FORM IN ORDER TO AVOID COPY MARKS |
WASH COLOURED AND WHITE FABRICS SEPARATELY

IRON CLOTHES AT MODERATE TEMPERATURE | DO NOT DRY FABRIC IN DIRECT SUNLIGHT
(EXTRA LACES, HANGINGS AND ACCESSORIES ARE NOT INCLUDED)

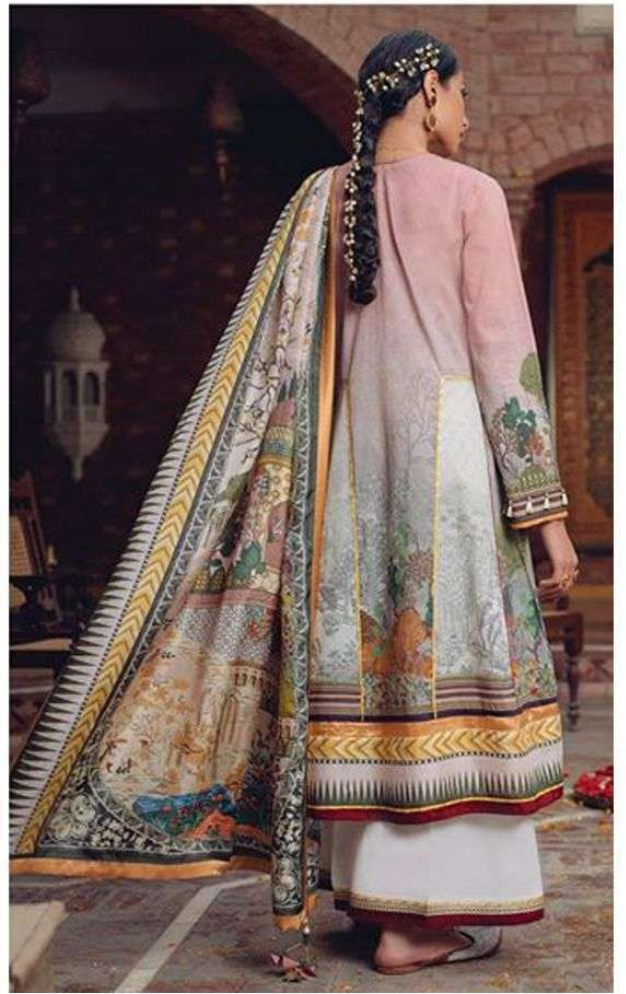
Rosemeen®
Afsaney

D.NO.73003





Epic®



WASHING INSTRUCTIONS

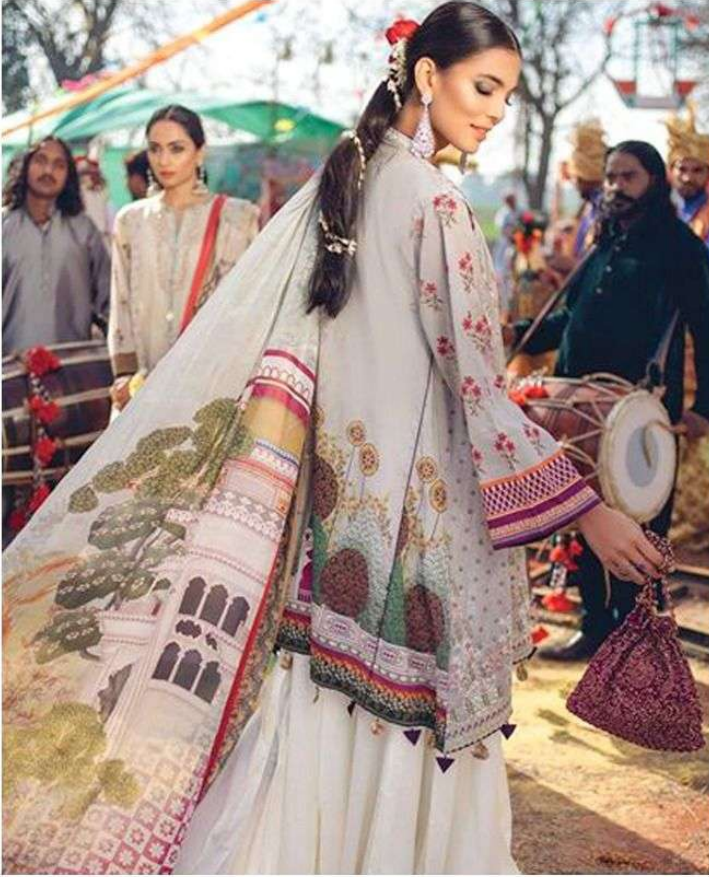
DO NOT USE ANY TYPE OF BLEACH OR STAIN REMOVING CHEMICALS
BEFORE CUTTING / STITCHING, FABRIC SHOULD BE SOAKED IN WATER
(ALL COMPONENTS SEPARATELY) FOR 15 MINUTES
DO NOT KEEP WET FABRIC IN TWISTED FORM IN ORDER TO AVOID COPY MARKS |
WASH COLOURED AND WHITE FABRICS SEPARATELY
IRON CLOTHES AT MODERATE TEMPERATURE | DO NOT DRY FABRIC IN DIRECT SUNLIGHT
(EXTRA LACES, HANGINGS AND ACCESSORIES ARE NOT INCLUDED)

Rosemeen®
Afsaney

D.NO.73004



Fepic®



WASHING INSTRUCTIONS

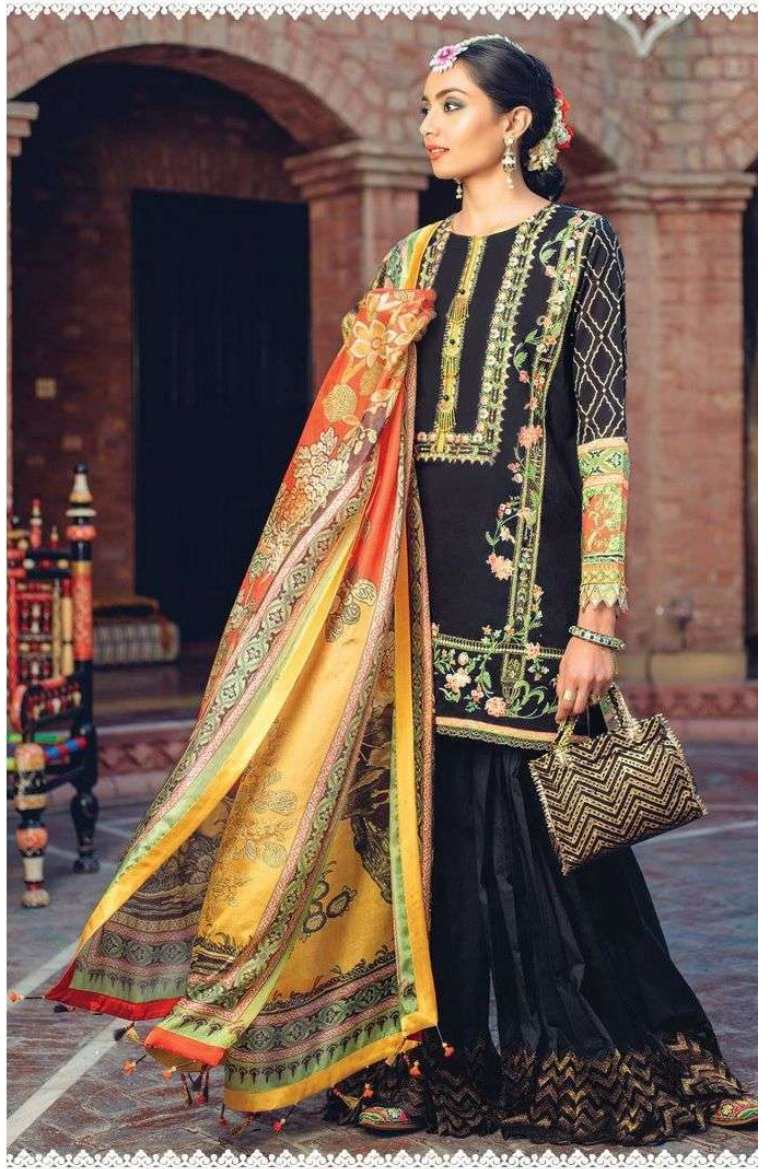
DO NOT USE ANY TYPE OF BLEACH OR STAIN REMOVING CHEMICALS
BEFORE CUTTING / STITCHING, FABRIC SHOULD BE SOAKED IN WATER
(ALL COMPONENTS SEPARATELY) FOR 15 MINUTES
DO NOT KEEP WET FABRIC IN TWISTED FORM IN ORDER TO AVOID COPY MARKS |
WASH COLOURED AND WHITE FABRICS SEPARATELY
IRON CLOTHES AT MODERATE TEMPERATURE | DO NOT DRY FABRIC IN DIRECT SUNLIGHT
(EXTRA LACES, HANGINGS AND ACCESSORIES ARE NOT INCLUDED)

Rosemeen®
Afsaney

D.NO.73007



Fepic®



WASHING INSTRUCTIONS

DO NOT USE ANY TYPE OF BLEACH OR STAIN REMOVING CHEMICALS
BEFORE CUTTING / STITCHING, FABRIC SHOULD BE SOAKED IN WATER
(ALL COMPONENTS SEPARATELY) FOR 15 MINUTES

DO NOT KEEP WET FABRIC IN TWISTED FORM IN ORDER TO AVOID COPY MARKS |
WASH COLOURED AND WHITE FABRICS SEPARATELY

IRON CLOTHES AT MODERATE TEMPERATURE | DO NOT DRY FABRIC IN DIRECT SUNLIGHT
(EXTRA LACES, HANGINGS AND ACCESSORIES ARE NOT INCLUDED)

Rosemeen®
Afsaney

D.NO.73005





D.NO.73001



D.NO.73002



D.NO.73003



D.NO.73004



D.NO.73005



D.NO.73006



D.NO.73007

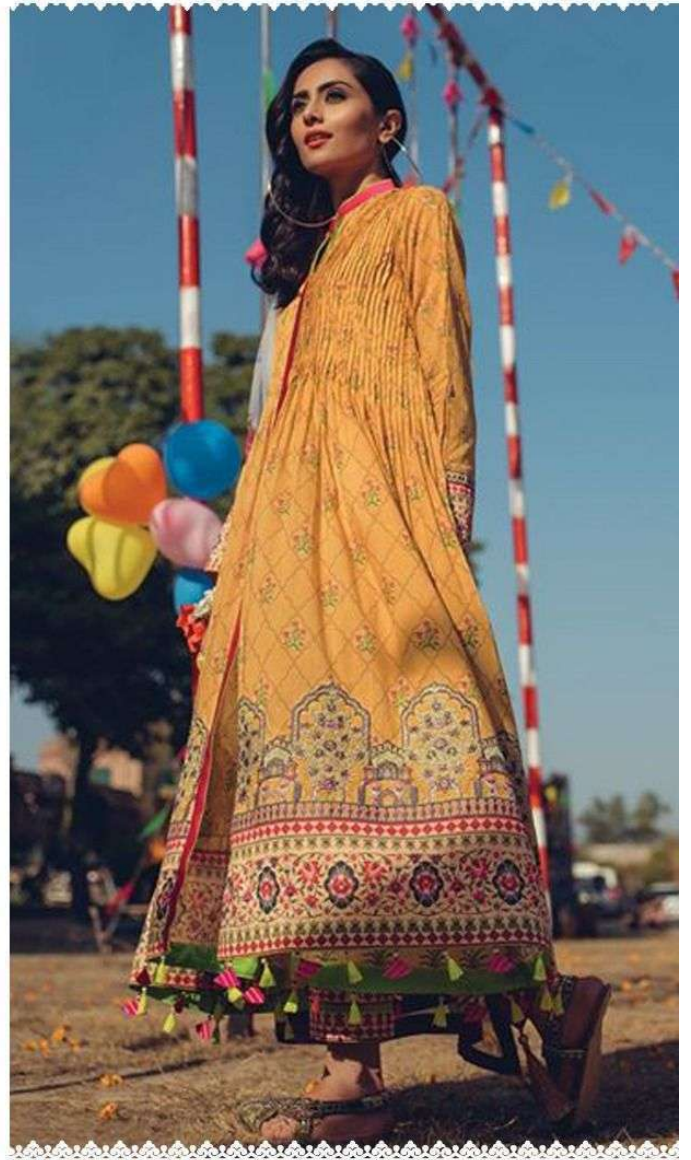


Fepic **Rosemeen**
Afsaney

:_Fepic

:Fb.com/Fepic11

Fepic®



WASHING INSTRUCTIONS

DO NOT USE ANY TYPE OF BLEACH OR STAIN REMOVING CHEMICALS
BEFORE CUTTING / STITCHING, FABRIC SHOULD BE SOAKED IN WATER
(ALL COMPONENTS SEPARATELY) FOR 15 MINUTES
DO NOT KEEP WET FABRIC IN TWISTED FROM IN ORDER TO AVOID COPY MARKS |
WASH COLOURED AND WHITE FABRICS SEPARATELY
IRON CLOTHES AT MODERATE TEMPERATURE | DO NOT DRY FABRIC IN DIRECT SUNLIGHT
(EXTRA LACES, HANGINGS AND ACCESSORIES ARE NOT INLUDED)

Rosemeen®
Afsaney

D.NO.73006





Epic[®]
Rosemeen[®]
Afsaney



Fepic[®]
Rosemeen[®]
Afsaney

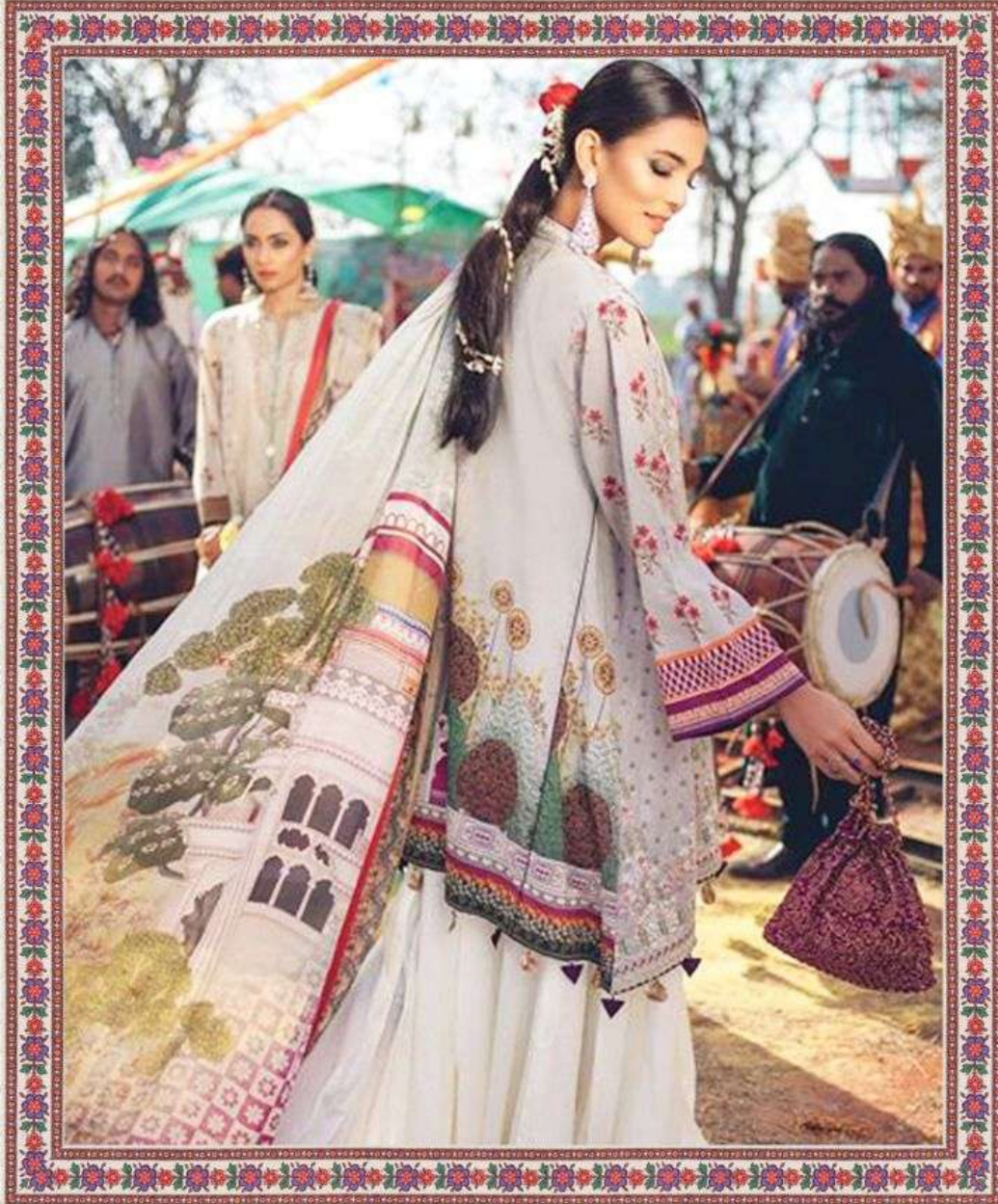




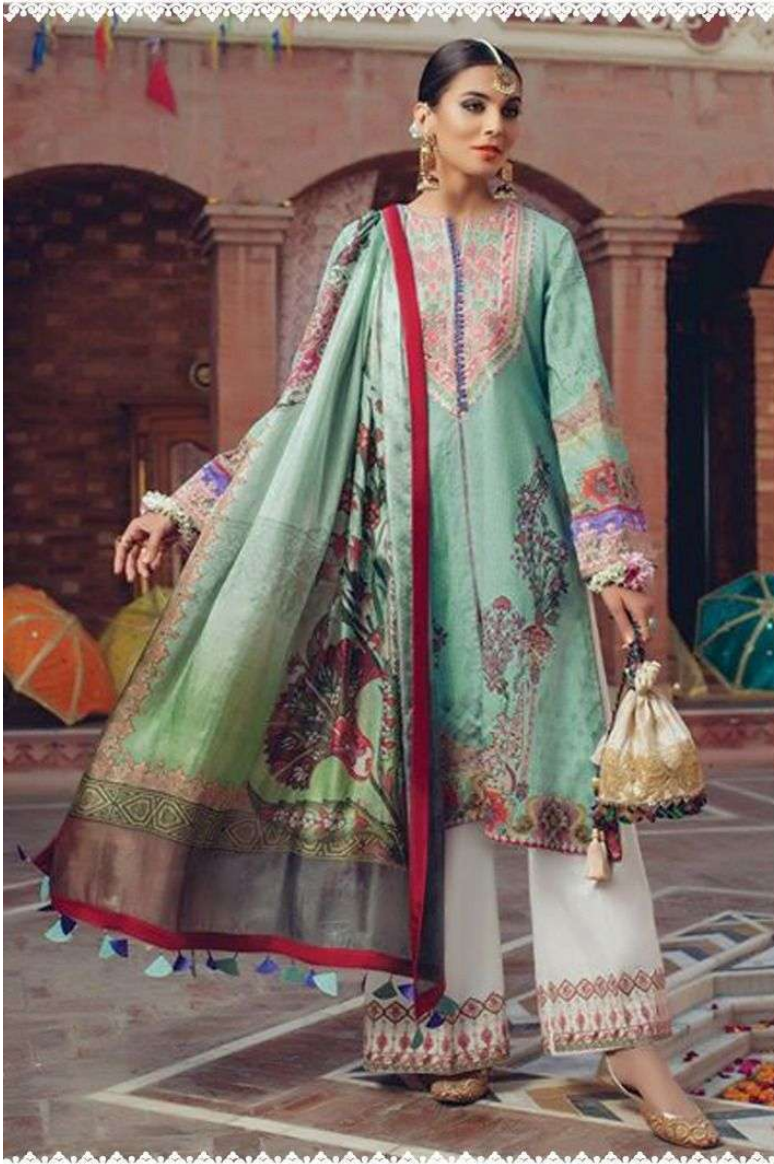
Epic[®]
Rosemeen[®]
Afsaney



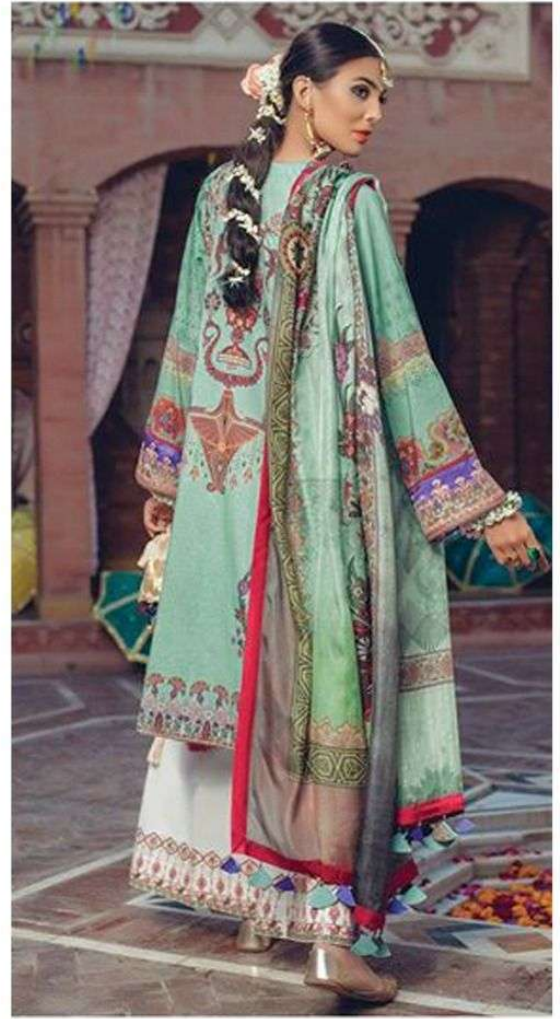
FEPIC[®]



Rosemeen[®]
Afsaney



Epic®



WASHING INSTRUCTIONS

DO NOT USE ANY TYPE OF BLEACH OR STAIN REMOVING CHEMICALS
BEFORE CUTTING / STITCHING, FABRIC SHOULD BE SOAKED IN WATER
(ALL COMPONENTS SEPARATELY) FOR 15 MINUTES

DO NOT KEEP WET FABRIC IN TWISTED FORM IN ORDER TO AVOID COPY MARKS |
WASH COLOURED AND WHITE FABRICS SEPARATELY

IRON CLOTHES AT MODERATE TEMPERATURE | DO NOT DRY FABRIC IN DIRECT SUNLIGHT
(EXTRA LACES, HANGINGS AND ACCESSORIES ARE NOT INCLUDED)

Rosemeen®
Afsaney

D.NO.73002





Fepic®



WASHING INSTRUCTIONS

DO NOT USE ANY TYPE OF BLEACH OR STAIN REMOVING CHEMICALS
 BEFORE CUTTING / STITCHING , FABRIC SHOULD BE SOAKED BE SOAKED IN WATER
 (ALL COMPONENTS SEPARATELY) FOR 15 MINUTES
 DO NOT KEEP WET FABRIC IN TWISTED FROM IN ORDER TO AVOID COPY MARKS I
 WASH COLOURED AND WHITE FABRICS SEPARATELY
 IRON CLOTHES AT MODERATE TEMPERATURE I DO NOT DRY FABRIC IN DIRECT SUNLIGHT
 (EXTRA LACES, HANGINGS AND ACCESSORIES ARE NOT INDUDED)

Rosemeen®
 Afsaney

D.NO.73001

